

# POINT WEST OFFICE SPACE

1851 HERITAGE LANE  
SACRAMENTO, CA



RIDGE CAPITAL

**SCENIC, CONVENIENT LOCATION - GREAT RATES!**



## Property Highlights

- Availability: ±584 RSF - ±2,809 RSF
- \$1.45 RSF, Fully Serviced
- Remodeled and professionally managed
- Point West location minutes from downtown, easy access to all freeways
- Walking distance to numerous restaurants, shopping and hotels
- On-site management office, conference center and auto detailing

FOR MORE INFORMATION, PLEASE CONTACT:

CHRIS SCHWARZE  
Senior Director  
(916) 288.4803  
chris.schwarze@cushwake.com  
CA License NO: 01291261

MARK TABAK  
Senior Associate  
(916) 288.4818  
mark.tabak@cushwake.com  
CA License NO: 01766396



One Capitol Mall, Suite 670  
Sacramento, CA 95814  
[cushmanwakefield.com](http://cushmanwakefield.com)  
CA License No: 00616335

# POINT WEST OFFICE SPACE

1851 HERITAGE LANE  
SACRAMENTO, CA



# RIDGE CAPITAL

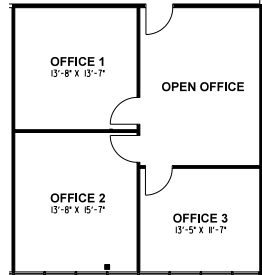
## SUITES AVAILABLE

|             |            |
|-------------|------------|
| Suite 129   | ±924 RSF   |
| Suite 155   | ±659 RSF   |
| Suite 182   | ±1,315 RSF |
| Suite 200   | ±1,454 RSF |
| Suite 250*  | ±2,225 RSF |
| Suite 253*  | ±584 RSF   |
| Suite 260   | ±2,162 RSF |
| Suite 275   | ±2,048 RSF |
| Suite 298** | ±634 RSF   |
| Suite 299** | ±991 RSF   |

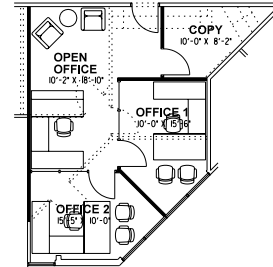
\*250 & 253 can be combined for a total of ±2,809 SF

\*\*298 & 299 can be combined for a total of ±1,625 SF

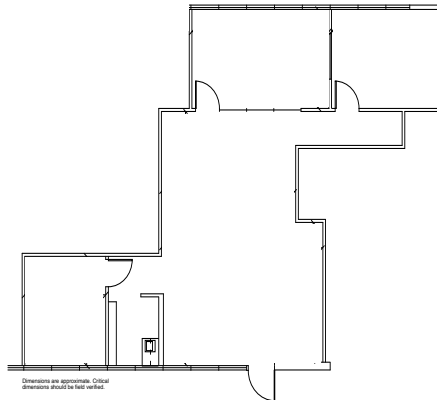
### SUITE 129 - ±924 RSF



### SUITE 155 - ±659 RSF



### SUITE 182 - ±1,315 RSF

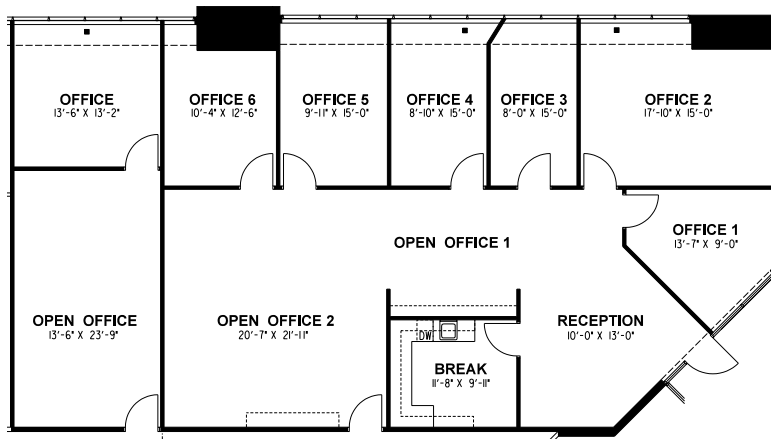


### SUITE 200 - ±1,454 RSF



### SUITE 253 - ±584 RSF

### SUITE 250 - ±2,225 RSF



## FOR MORE INFORMATION, PLEASE CONTACT:

**CHRIS SCHWARZE**  
Senior Director  
(916) 288.4803  
chris.schwarze@cushwake.com  
CA License NO: 01291261

**MARK TABAK**  
Senior Associate  
(916) 288.4818  
mark.tabak@cushwake.com  
CA License NO: 01766396

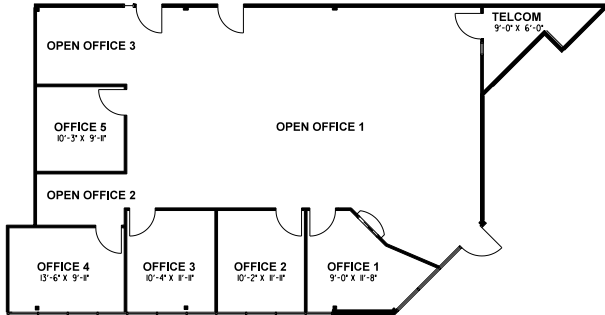


One Capitol Mall, Suite 670  
Sacramento, CA 95814  
[cushmanwakefield.com](http://cushmanwakefield.com)  
CA License No: 00616335

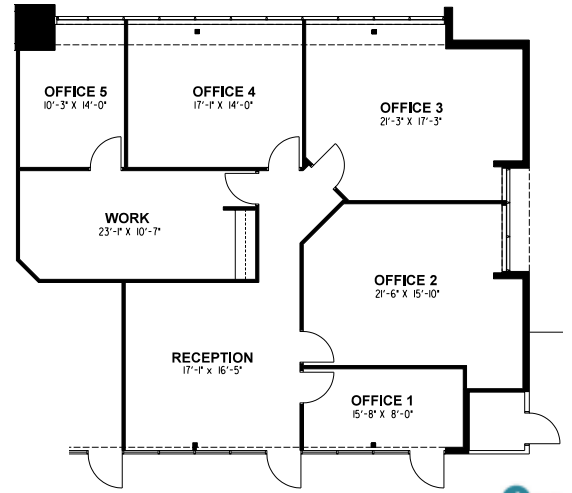
**POINT WEST OFFICE SPACE**  
**1851 HERITAGE LANE**  
**SACRAMENTO, CA**



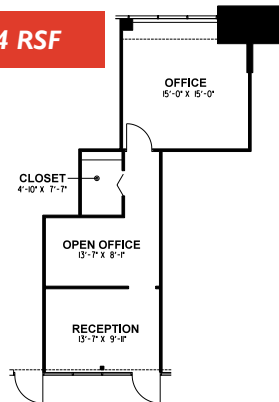
**SUITE 260 - ±2,162 RSF**



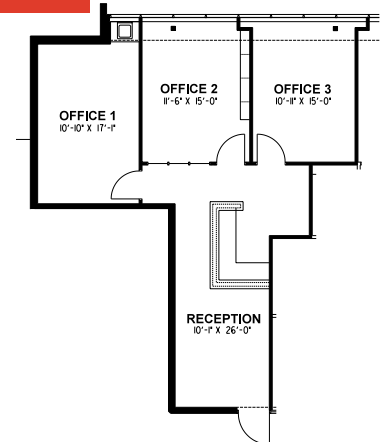
**SUITE 275 - ±2,048 RSF**



**SUITE 298- ±634 RSF**



**SUITE 299- ±991 RSF**



**FOR MORE INFORMATION, PLEASE CONTACT:**

**CHRIS SCHWARZE**  
 Senior Director  
 (916) 288.4803  
 chris.schwarze@cushwake.com  
 CA License NO: 01291261

**MARK TABAK**  
 Senior Associate  
 (916) 288.4818  
 mark.tabak@cushwake.com  
 CA License NO: 01766396



One Capitol Mall, Suite 670  
 Sacramento, CA 95814  
[cushmanwakefield.com](http://cushmanwakefield.com)  
 CA License No: 00616335

© Copyright 2011 - Cushman & Wakefield Inc. - All rights reserved. No warranty or representation, express or implied, is made as to the accuracy of the information contained herein, and same is submitted subject to errors omissions, change of price, rental or other conditions, withdrawal without notice, and to any specific listing conditions, imposed by our principals.

**POINT WEST OFFICE SPACE**  
1851 HERITAGE LANE  
SACRAMENTO, CA



**CONVENIENT POINT WEST LOCATION - EASY ACCESS TO ALL  
FREEWAYS, WALKING DISTANCE TO RESTAURANTS & HOTELS.**

**FOR MORE INFORMATION, PLEASE CONTACT:**

**CHRIS SCHWARZE**  
Senior Director  
(916) 288.4803  
chris.schwarze@cushwake.com  
CA License NO: 01291261

**MARK TABAK**  
Senior Associate  
(916) 288.4818  
mark.tabak@cushwake.com  
CA License NO: 01766396



One Capitol Mall, Suite 670  
Sacramento, CA 95814  
[cushmanwakefield.com](http://cushmanwakefield.com)  
CA License No: 00616335