

A Project By



FOR LEASE



10811 INTERNATIONAL DRIVE

RANCHO CORDOVA, CALIFORNIA
±55,192 SF OFFICE

Overview

- Approximately ±55,192 RSF (Divisible to ±27,000 SF)
- Lease Rate: \$1.80 Full Service; TI's negotiable
- Parking Ratio: 4.0/1,000 SF
- Local property management and ownership
- Easy access to Highway 50, numerous retail amenities and affordable housing
- The two-story building features a full height glass exterior front and a water feature offering an attractive and unique look suited for regional flagship offices
- The building's flexible floor plans make it ideal for a full floor or full building user



CONTACT

Kevin Partington
kevin.partington@cushwake.com
(916) 288.4807
CA License# 01199010





CONTACT

Kevin Partington
kevin.partington@cushwake.com
(916) 288.4807
CA License# 01199010

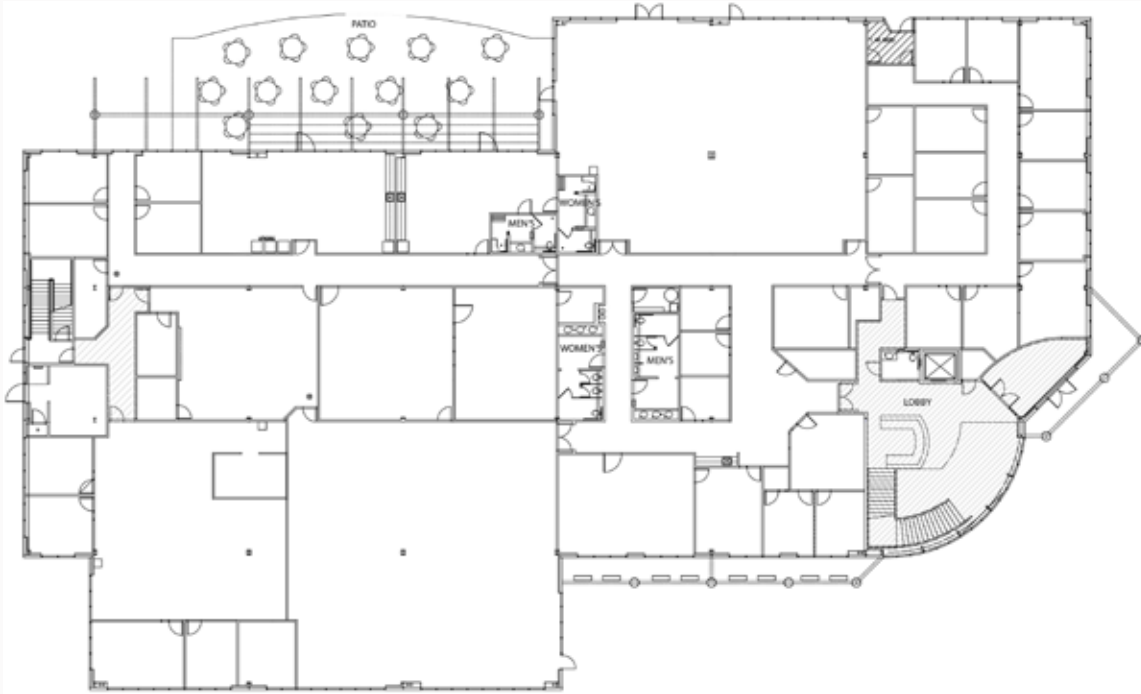


A Project By

RIDGE CAPITAL

FLOOR PLANS

FIRST FLOOR: ±27,596 RSF



SECOND FLOOR: ±27,596 RSF



CONTACT

Kevin Partington
kevin.partington@cushwake.com
(916) 288.4807
CA License# 01199010

